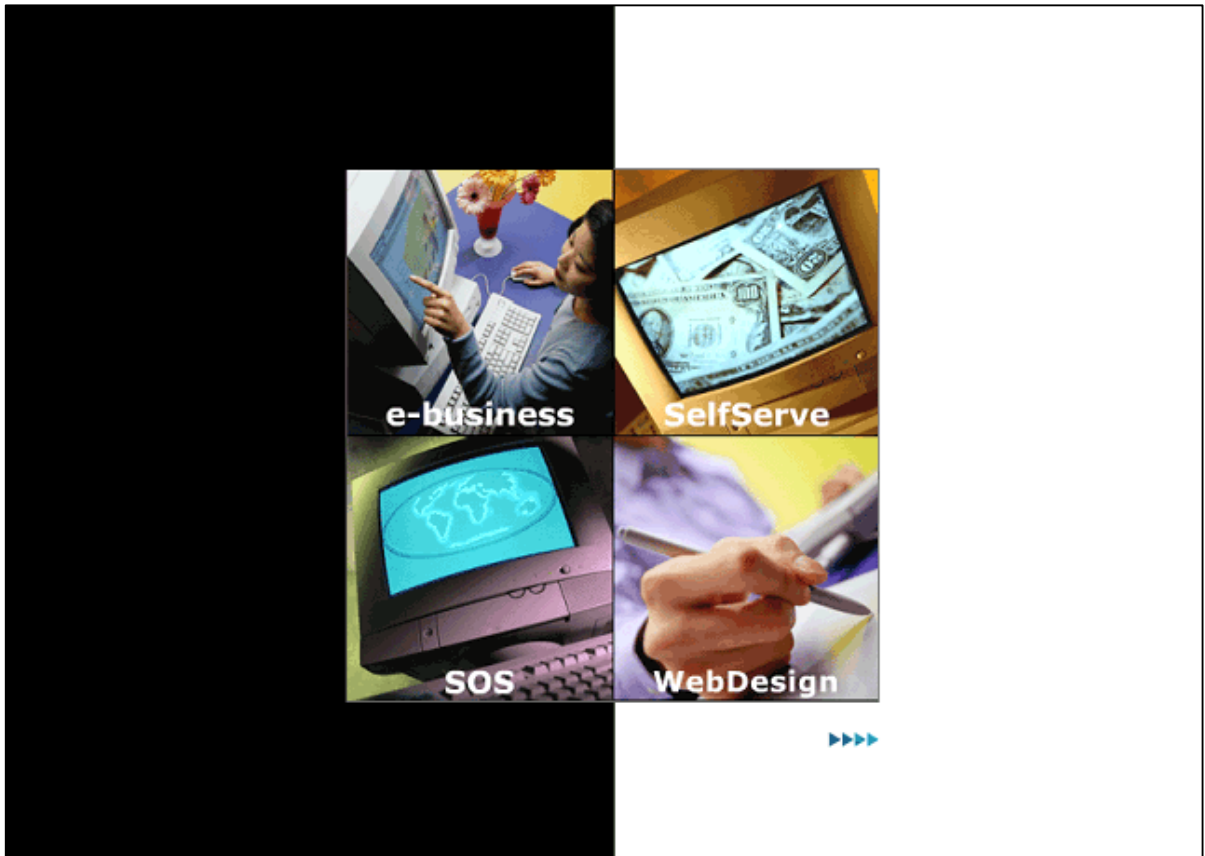


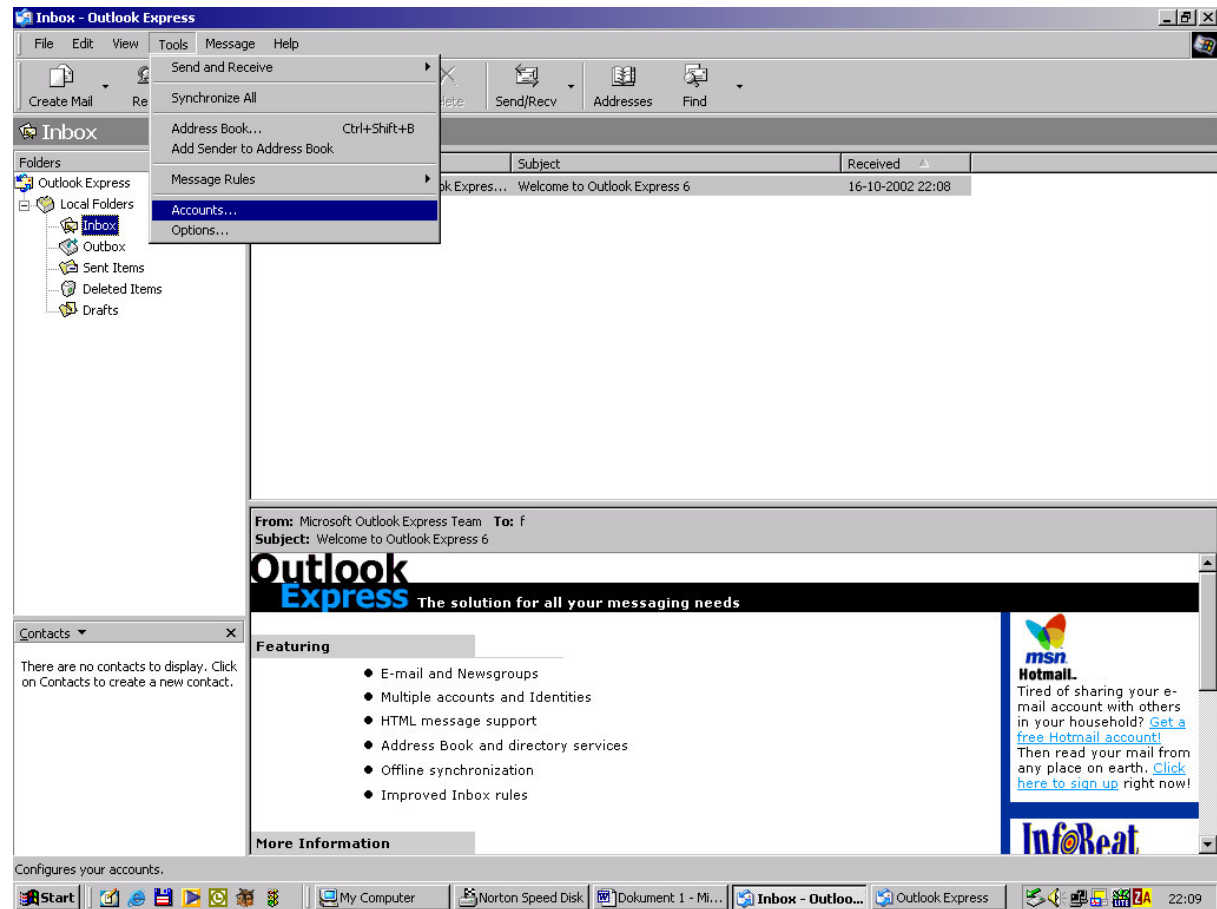
## Guide Outlook Express

Version 2007.1

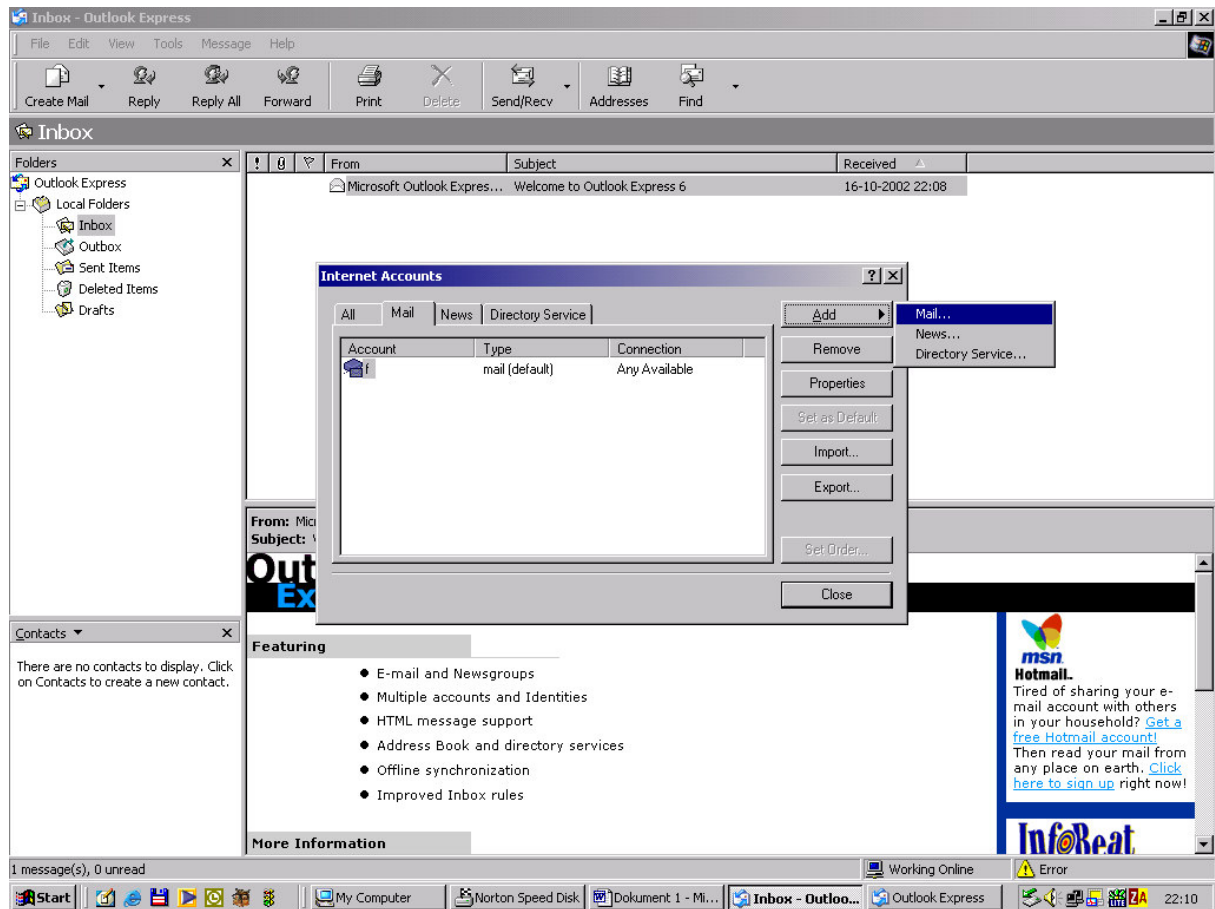


Please use following steps in Outlook Express.

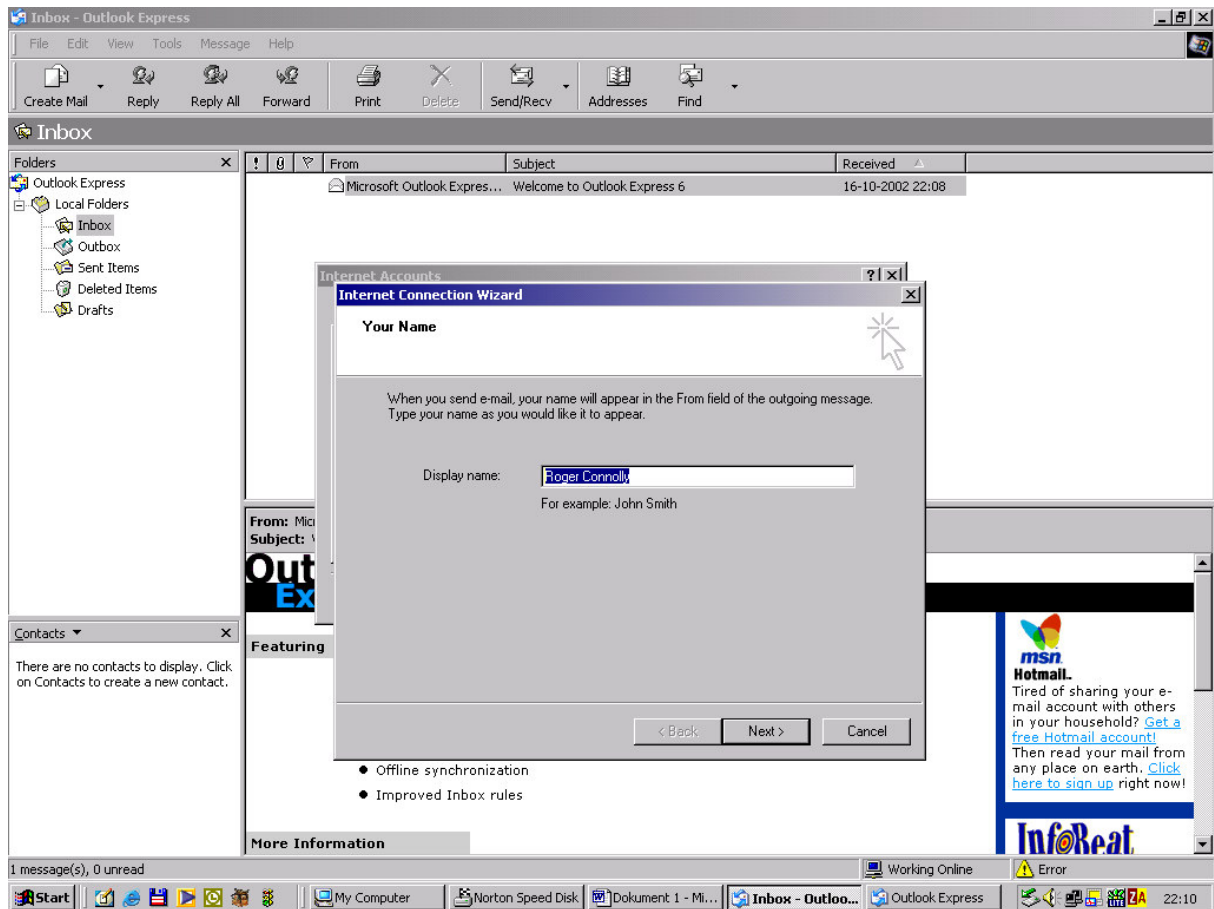
Under Tools click on Accounts.



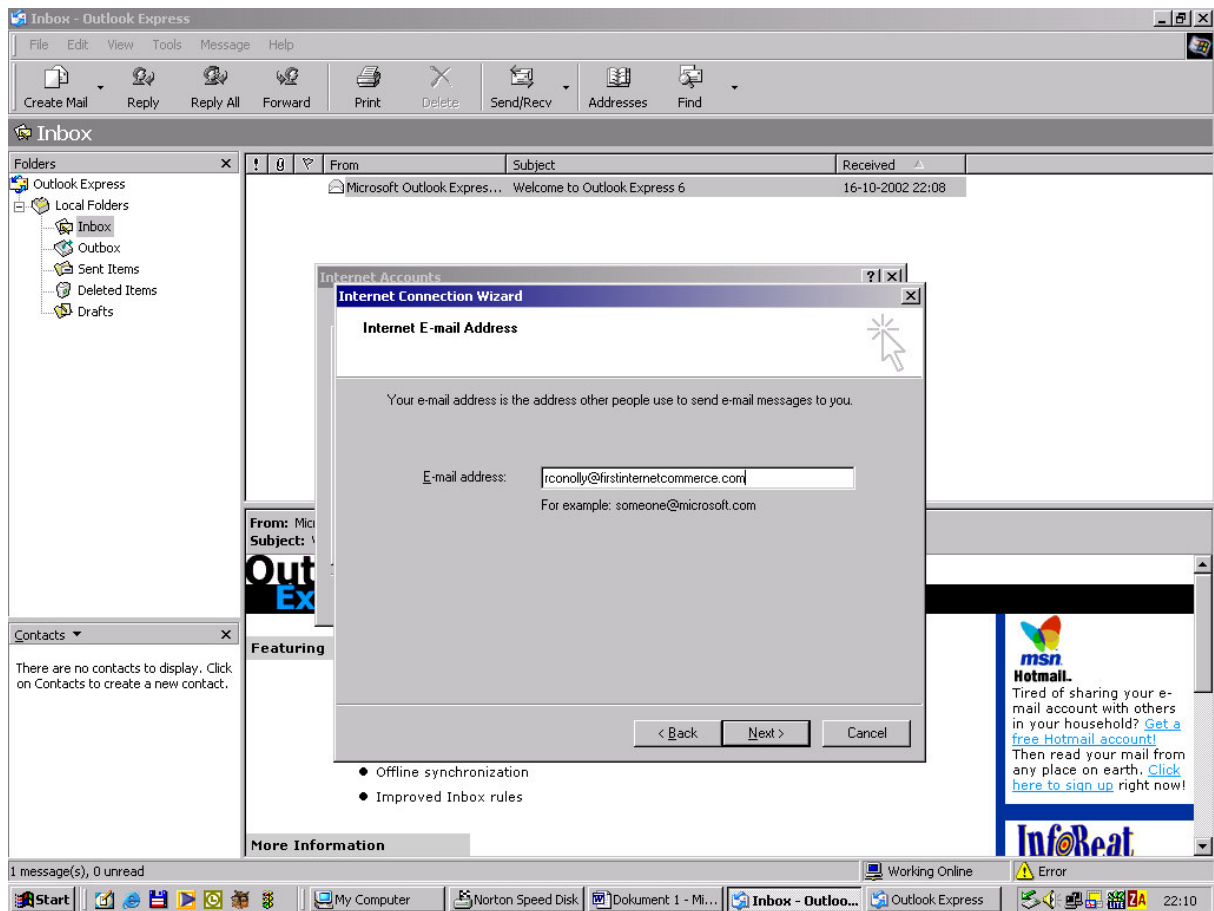
On the right click on Add and choose Mail



Type your name, then click on Next.



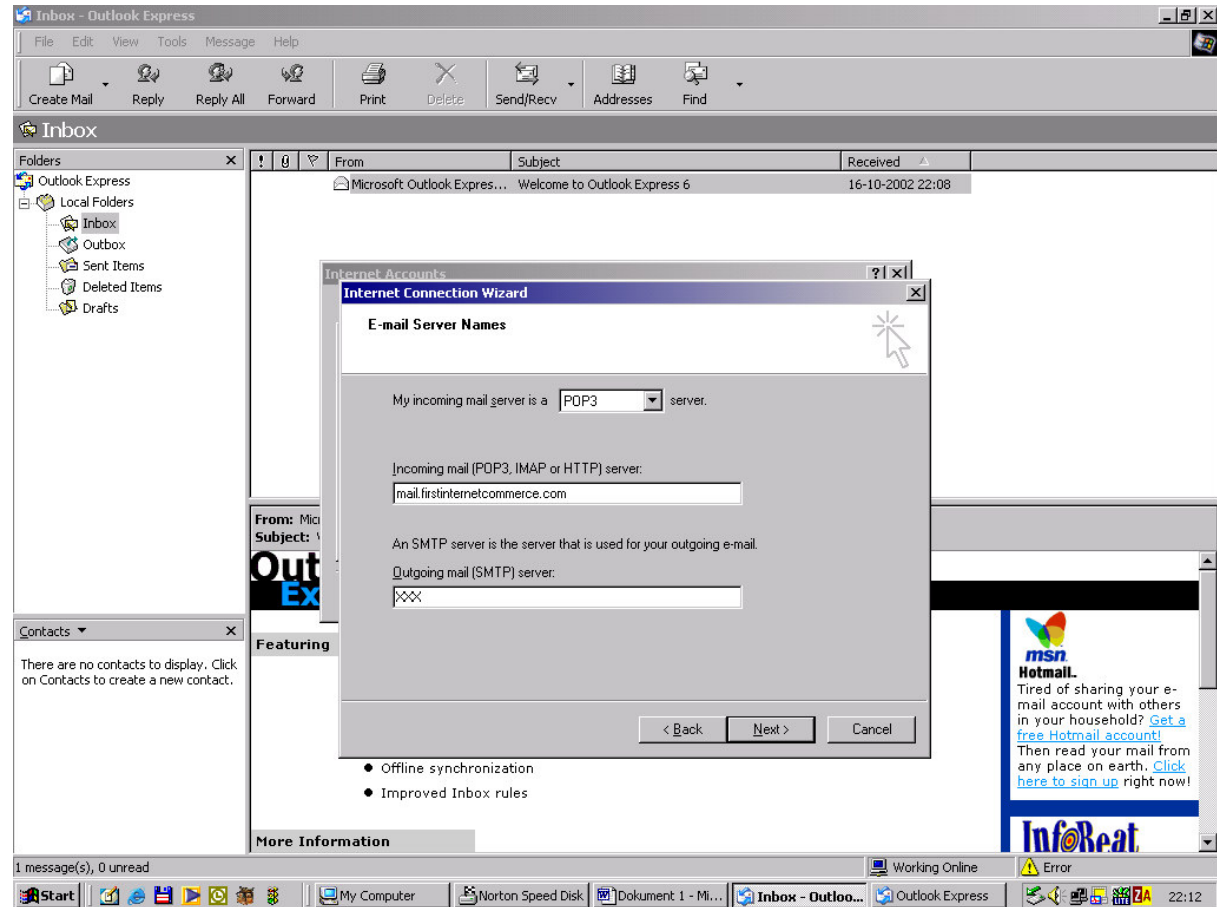
Type your e-mail address here and click on Next.



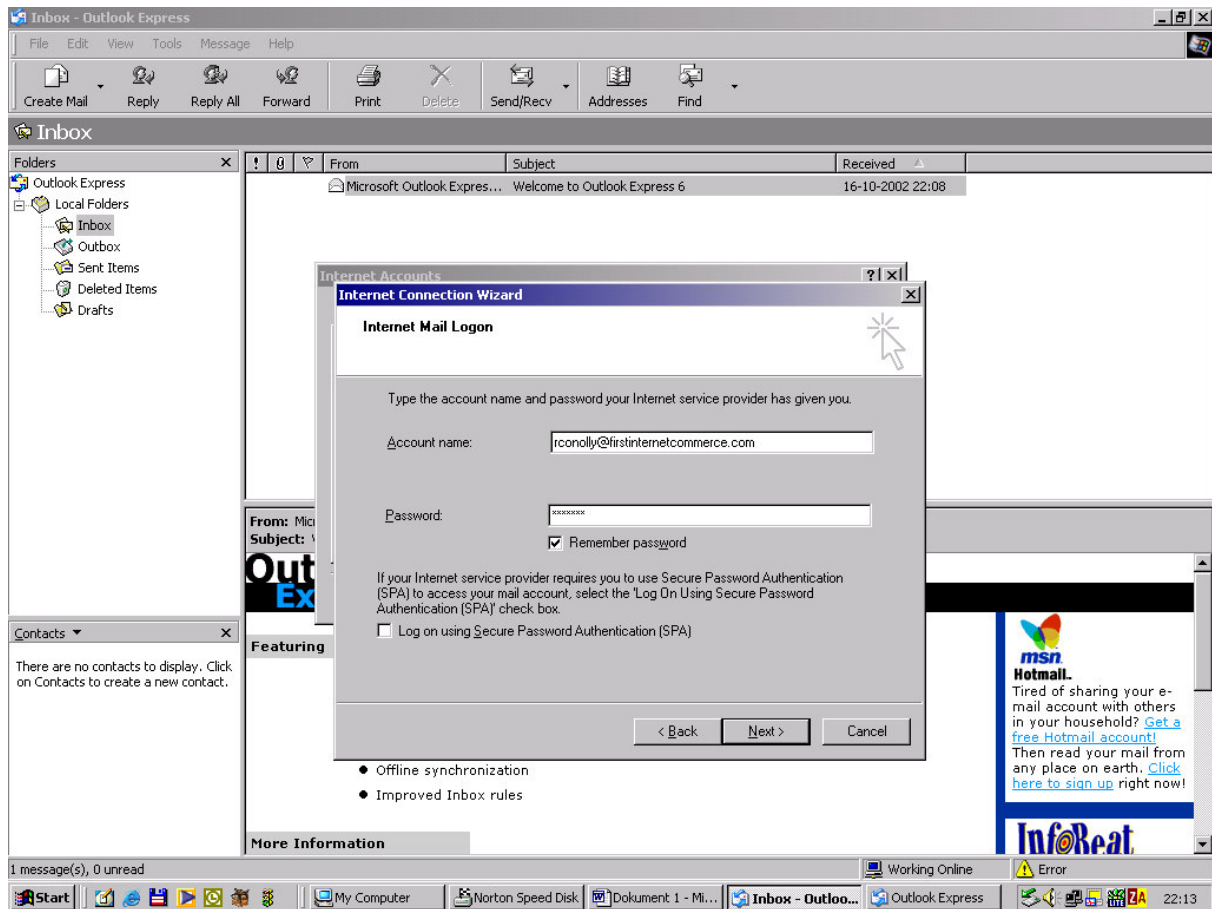
Type your incoming mail (POP3) server: **mail.yourdomain**

Type your Outgoing mail (SMTP) server: **mail.yourdomain**

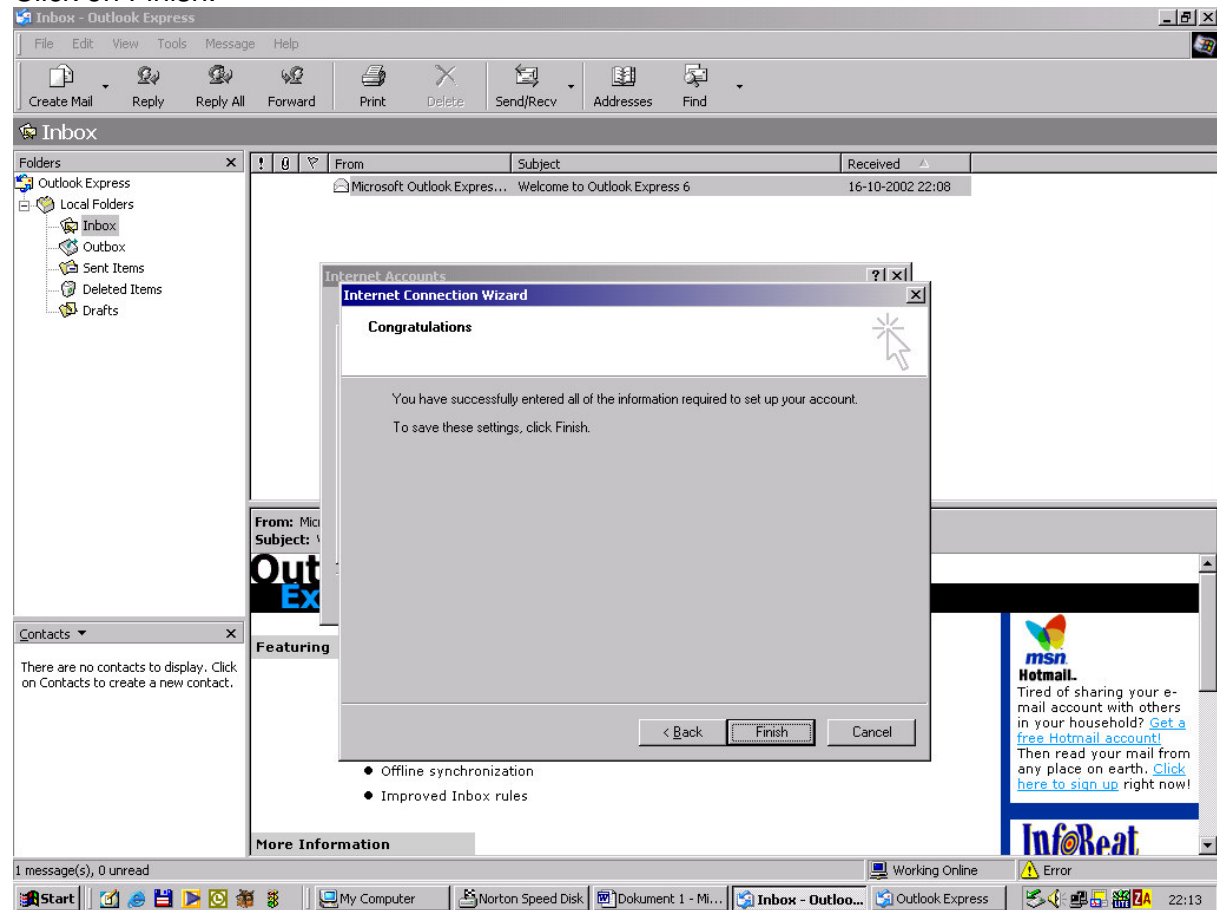
Then click on Next.



Type your e-mail address and your password. Then click on Next.



Click on Finish.



Congratulations, you should be ready to send and receive e-mails.

Good Luck!